

Industrial Building

32 Kripes Road | E. Granby, CT

NAI Glickman Kovago & Jacobs



14,960 sf industrial/truck terminal **for lease**

32 Kripes Road is a cross dock facility in East Granby, CT located 1.4 miles off of Route 20 and 4.8 miles from Interstate 91. Bolstered by the presence of the Bradley International Airport, East Granby has a significant presence of distribution operations for regional and national companies. The neighboring New England Tradeport Industrial park is home to regional shipping centers for companies such as Fedex, Walgreens, Family Dollar, and Dominoes. Amazon recently completed development for a fulfillment center right off of Interstate 91 on Route 20.



NAI Glickman Kovago & Jacobs

1 Mercantile Street Suite 510 | Worcester MA 01608

✉ **Jim Glickman**
508.769.5007

✉ **Nolan Ryan**
774.364.4642

✉ **Cody Miner**
508.389.3769

BROKERAGE SERVICES



CONSTRUCTION MANAGEMENT



PROPERTY MANAGEMENT

Industrial Building

32 Kripes Road | E. Granby, CT

NAI Glickman Kovago & Jacobs

Building Specifications

BUILDING SIZE	14,960 +/- SF
OFFICE AREA	1,500 +/- SF
LAND AREA	11 Acres
YEAR BUILT	2011
ZONING	CP
PARKING	Surface
CONSTRUCTION TYPE	Steel
DOCKS	24 cross docks
POWER	_____Amps, ___ volts
HEAT	Natural gas
CLEAR HEIGHT	16' 4"



NAI Glickman Kovago & Jacobs

1 Mercantile Street Suite 510 | Worcester MA 01608

✉ **Jim Glickman**
508.769.5007

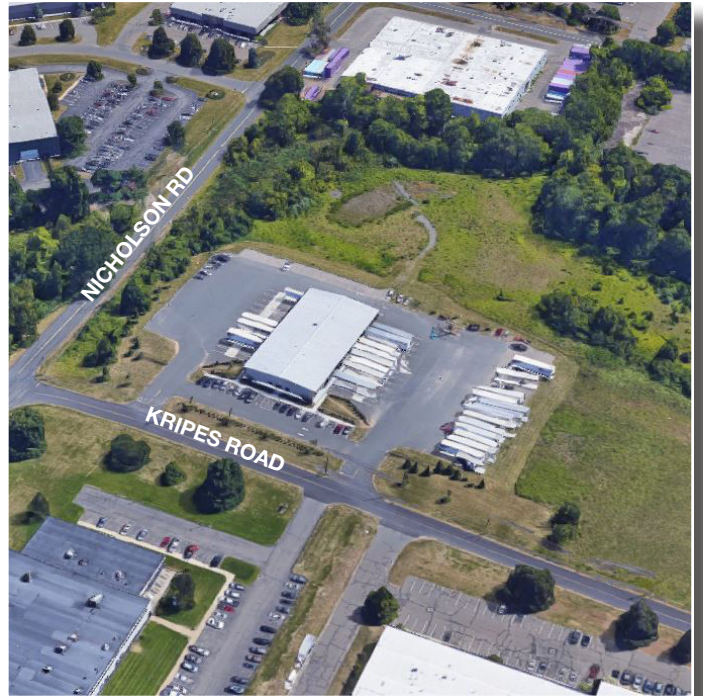
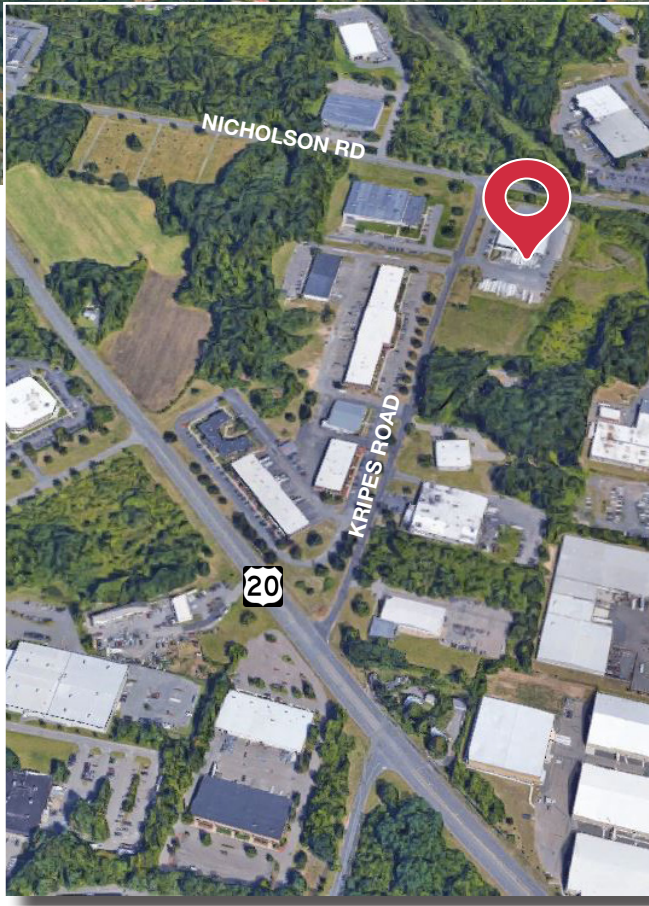
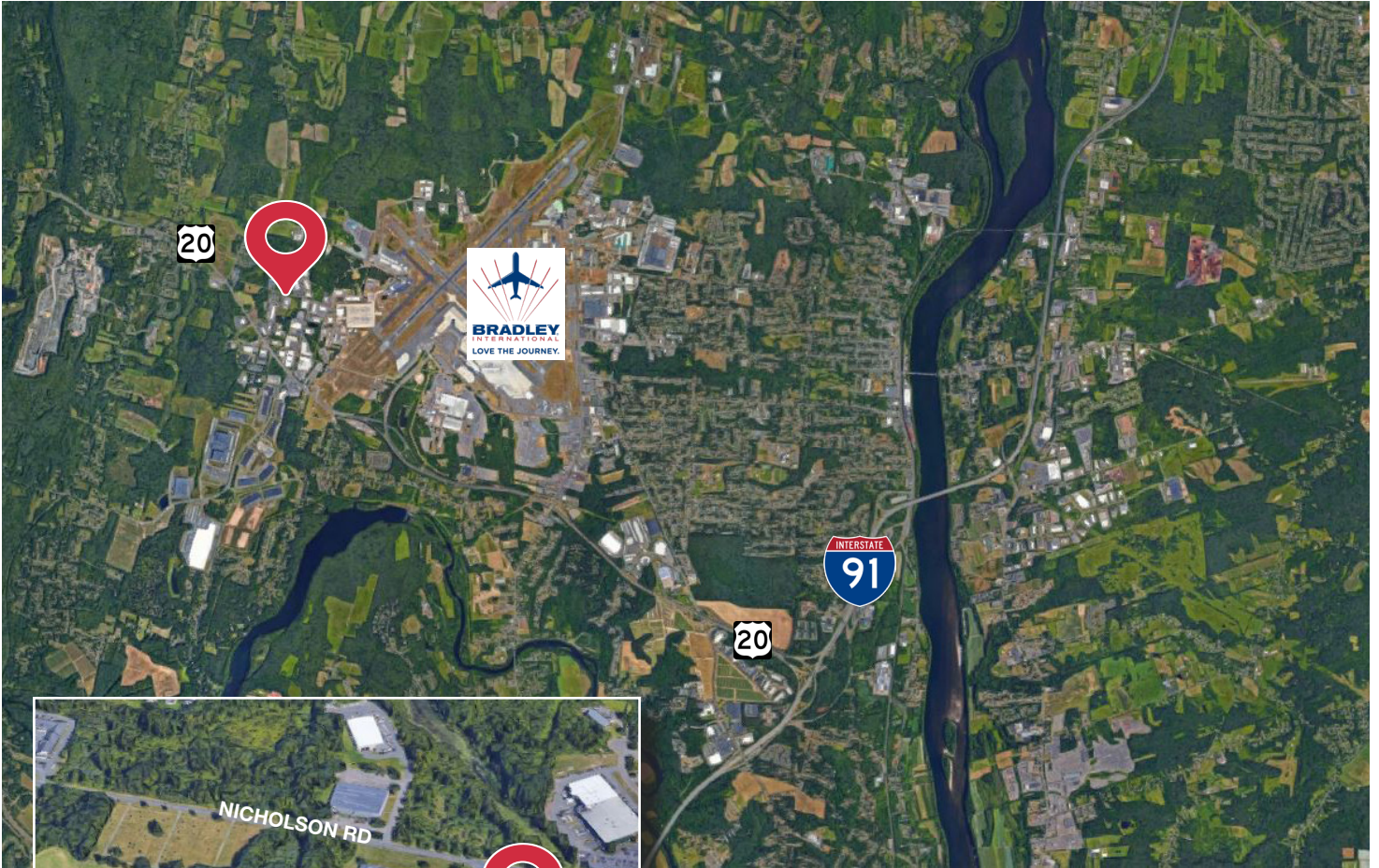
✉ **Nolan Ryan**
774.364.4642

✉ **Cody Miner**
508.389.3769

BROKERAGE SERVICES

CONSTRUCTION MANAGEMENT

PROPERTY MANAGEMENT



NA Glickman Kovago & Jacobs

1 Mercantile Street Suite 510 | Worcester MA 01608

✉ **Jim Glickman**
508.769.5007

✉ **Nolan Ryan**
774.364.4642

✉ **Cody Miner**
508.389.3769

BROKERAGE SERVICES



CONSTRUCTION MANAGEMENT



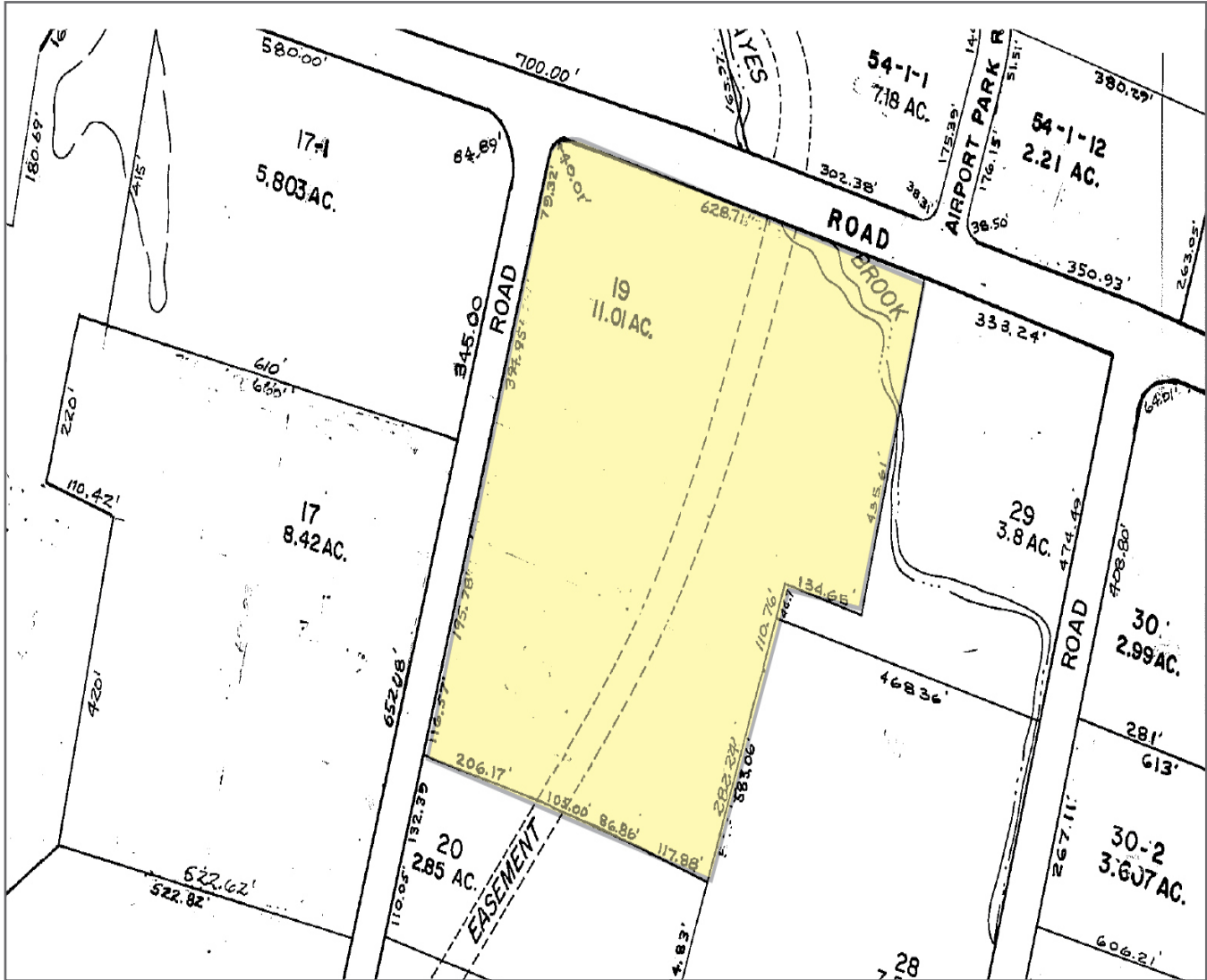
PROPERTY MANAGEMENT

Industrial Building

32 Kripes Road | E. Granby, CT

NAI Glickman Kovago & Jacobs

SITE PLAN



NAI Glickman Kovago & Jacobs

1 Mercantile Street | Suite 510 | Worcester MA 01608

✉ Jim Glickman

508.769.5007

✉ Nolan Ryan

774.364.4642

✉ Cody Miner

508.389.3769

BROKERAGE SERVICES



CONSTRUCTION MANAGEMENT



PROPERTY MANAGEMENT